

## Chorley and South Ribble Hospital Emergency Department

### Monthly Bulletin: April 2011 to March 2012

This bulletin provides a breakdown of all injury attendances at Chorley and South Ribble Hospital Emergency Department (ED) between April 2011 and March 2012.

Between April 2011 and March 2012 there were 25,969 attendances to Chorley and South Ribble Hospital ED. The month with the highest attendances was July with 2,474 attendances (**Figure 1**). There were more male than female attendances presenting at Chorley and South Ribble Hospital ED (males=14,149; 54%).

**Figure 2** illustrates the age group of ED attendances for each month. The majority of ED attendances were aged 30-59 (n=8,636; 33%) and 25% were 15-29 years old (n=6,575).

**Table 1** details the injury group of ED attendances. In half (50%) of all attendances, injury group was recorded as other injury. Falls accounted for 32% of attendances, sports injury 9%, road traffic collisions (RTC) 6% and assaults 3%.

**Table 2** shows the location of incident for patients attending Chorley and South Ribble Hospital ED. The primary incident location for injury attendances was in the home, where a third (33%) of injuries occurred. This was followed by other location (17%) and public place (16%). The discharge destination for injury attendances is displayed in **Table 3**. It indicates that almost six in ten (58%) attendances

were discharged with no follow-up treatment. More than one in ten (16%) attendances were discharged into the care of their GP and 12% were referred to the fracture clinic.

#### Assault attendances

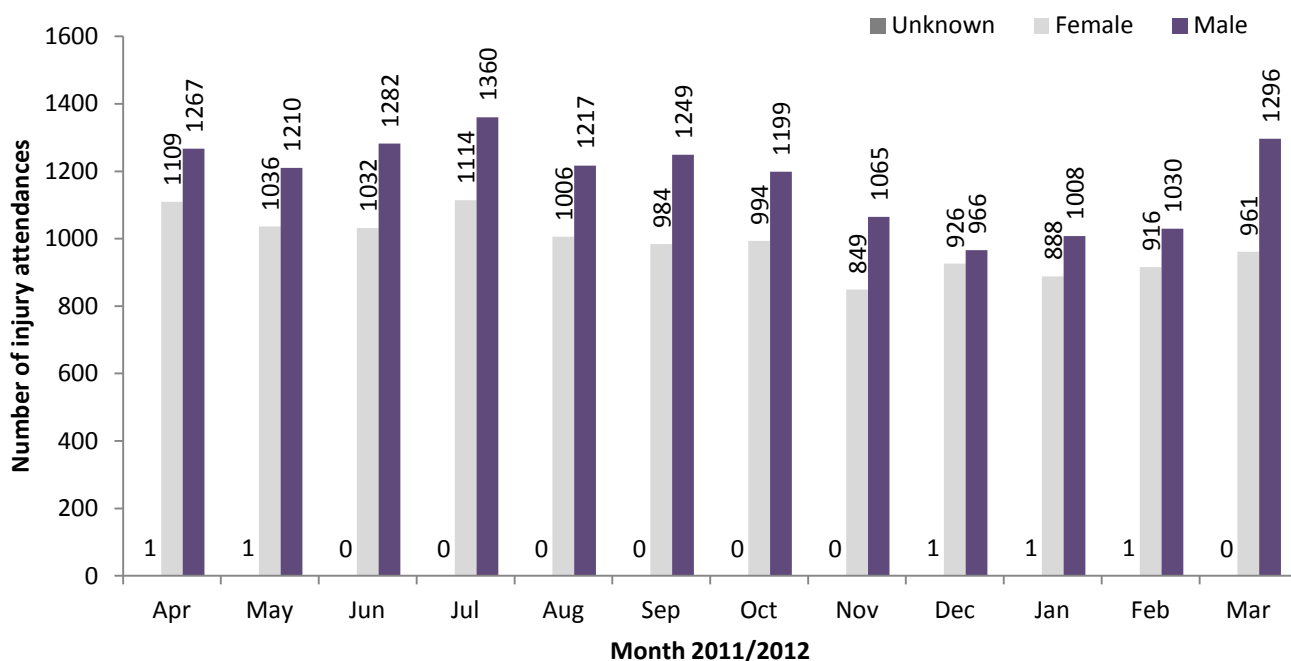
Between April 2011 and March 2012 there were 652 assault attendances to Chorley and South Ribble Hospital ED. The month with the highest attendance was March with 67 attendances (**Figure 3**). There were more male than female assault attendances presenting at Chorley and South Ribble General Hospital ED (males=431; 66%).

**Table 4** details the age group of assault attendances for each month. The majority of ED assault attendances were aged 15-29 (n=319; 49%) and 40% were 30-59 years old (n=264).

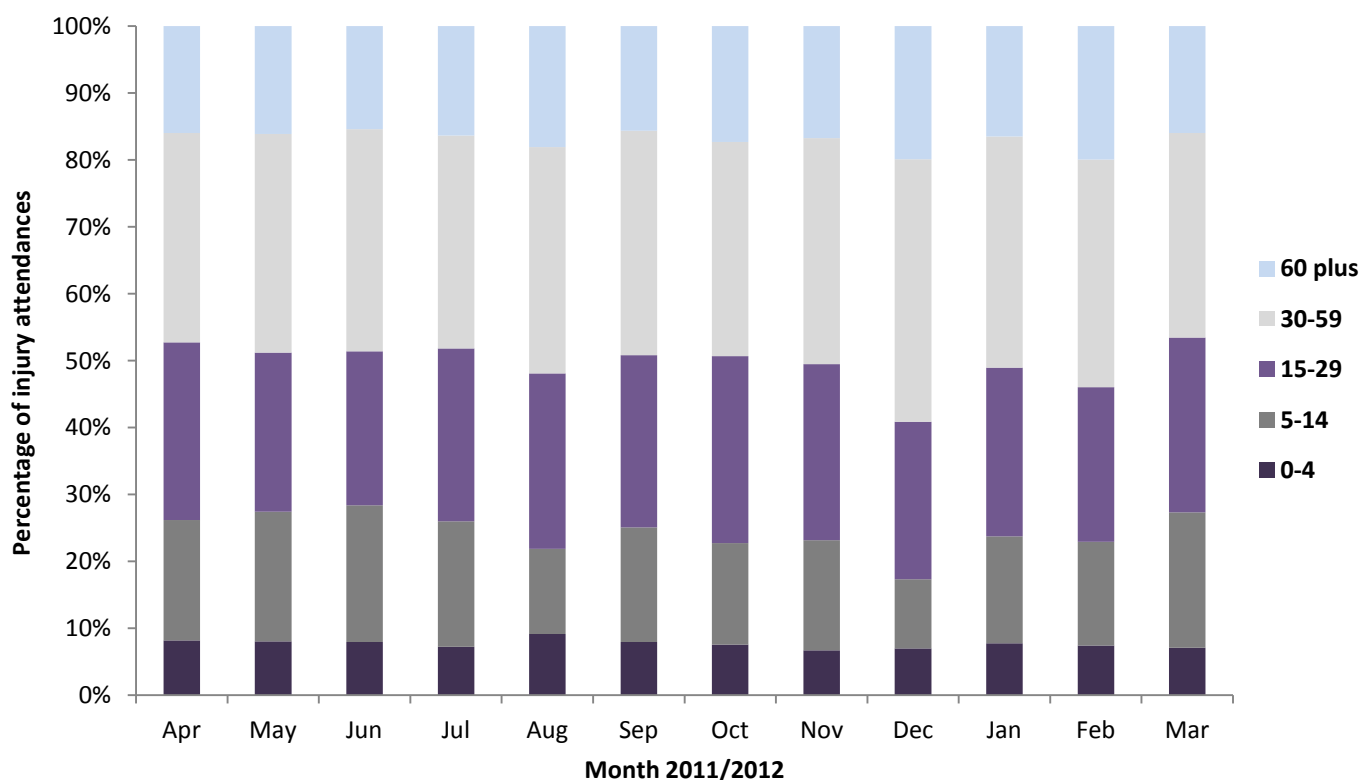
**Table 5** illustrates the incident location for assault attendances to Chorley and South Ribble Hospital ED. The primary incident locations for assault attendances were in a public place (31%) and other location (30%), followed by in the home (14%).

The discharge destination for assault attendances is displayed in **Table 6**. It indicates that over half (51%) of assault attendances were discharged with no follow-up treatment. Nearly four in ten required follow-up treatment (39%) and 3% of assault attendees were admitted into hospital.

**Figure 1: Gender of ED injury attendances by month, April 2011 to March 2012**



**Figure 2: Age group of ED injury attendances by month, April 2011 to March 2012**



**Table 1: ED injury attendances by injury group and month, April 2011 to March 2012**

Injury group	Apr	May	Jun	Jul	Aug	Sep	Oct	Nov	Dec	Jan	Feb	Mar	Total	%
Other injury	1259	1126	1196	1327	1105	1077	1075	907	898	928	917	1167	12982	50
Fall	717	702	715	743	752	737	699	642	686	587	735	640	8355	32
Sports injury	233	202	194	200	189	218	207	178	69	161	136	248	2235	9
RTC	113	157	141	141	124	131	138	130	164	153	101	128	1621	6
Assault	50	48	57	50	46	58	57	46	64	58	51	67	652	3
Deliberate self-harm	5	12	11	13	7	12	17	11	12	10	7	7	124	0
<b>Total</b>	<b>2377</b>	<b>2247</b>	<b>2314</b>	<b>2474</b>	<b>2223</b>	<b>2233</b>	<b>2193</b>	<b>1914</b>	<b>1893</b>	<b>1897</b>	<b>1947</b>	<b>2257</b>	<b>25969</b>	<b>100</b>

**Table 2: ED injury attendances by location of incident and month, April 2011 to March 2012<sup>1,2,3</sup>**

Location	Apr	May	Jun	Jul	Aug	Sep	Oct	Nov	Dec	Jan	Feb	Mar	Total	%
Home	758	755	695	781	796	693	727	630	737	674	714	694	8654	33
Other	408	441	389	431	246	357	366	318	396	311	338	345	4346	17
Public place	420	344	408	449	472	384	344	266	280	260	289	327	4243	16
Work	238	201	246	233	232	263	249	231	194	192	196	233	2708	10
Sport	211	177	194	197	180	190	180	162	56	133	143	214	2037	8
Educational establishment	62	136	137	117	5	122	125	156	64	153	117	212	1406	5
Home other persons	79	45	62	66	78	78	79	52	54	69	56	69	787	3
Holiday	35	34	57	59	73	49	37	14	12	15	21	32	438	2
Garden	88	54	49	64	41	26	10	8	13	12	8	47	420	2
Public building	17	14	8	20	12	13	24	24	44	41	34	28	279	1
Public park/playground	30	22	25	32	52	23	19	21	11	8	7	24	274	1
Nursery	18	6	16	10	9	12	5	9	7	9	10	16	127	0
Special event	***	5	13	8	16	14	11	14	10	5	***	***	103	0
Prison	***	9	6	***	9	7	8	***	8	9	***	***	73	0
Hospital	6	***	6	***	***	***	6	***	***	***	8	5	47	0
Public transport	***	***	***	***	***	***	***	***	***	***	***	***	<25	0
Bus station	***	***	***	***	***	***	***	***	***	***	***	***	***	0
<b>Total</b>	<b>2377</b>	<b>2247</b>	<b>2314</b>	<b>2474</b>	<b>2223</b>	<b>2233</b>	<b>2193</b>	<b>1914</b>	<b>1893</b>	<b>1897</b>	<b>1947</b>	<b>2257</b>	<b>25969</b>	<b>100</b>

**Table 3: ED injury attendances by discharge destination and month, April 2011 to March 2012<sup>4</sup>**

Discharge destination	Apr	May	Jun	Jul	Aug	Sep	Oct	Nov	Dec	Jan	Feb	Mar	Total	%
Discharged - no follow-up	1340	1370	1307	1367	1302	1343	1299	1180	1045	1077	1133	1294	15057	58
Discharged - follow-up by GP	349	326	371	377	369	303	308	244	330	345	339	387	4048	16
Fracture clinic	307	257	307	331	262	279	257	225	233	222	240	253	3173	12
ED clinic	120	74	85	102	70	76	85	56	50	62	57	69	906	3
Outpatient clinic	56	41	51	65	57	58	65	50	48	44	32	70	637	2
Admitted RPH	73	55	57	61	53	39	46	39	56	39	39	50	607	2
Admitted CDGH	40	41	42	55	50	36	53	53	53	41	42	30	536	2
Left before being treated	51	44	45	73	30	48	28	29	28	32	28	65	501	2
Other healthcare professional	31	32	34	27	20	36	43	34	36	26	28	32	379	1
Left having refused treatment	5	5	12	5	5	***	***	***	***	***	5	***	51	0
Transferred to other HCP	***	***	***	8	***	5	5	***	7	***	***	***	45	0
Police custody	***	***	***	***	***	6	***	***	***	***	***	***	23	0
Other	***	***	***	***	***	***	***	***	***	***	***	***	6	0
<b>Total</b>	<b>2377</b>	<b>2247</b>	<b>2314</b>	<b>2474</b>	<b>2223</b>	<b>2233</b>	<b>2193</b>	<b>1914</b>	<b>1893</b>	<b>1897</b>	<b>1947</b>	<b>2257</b>	<b>25969</b>	<b>100</b>

## Assaults

**Table 4: ED assault attendances by age group and month, April 2011 to March 2012<sup>5</sup>**

Age group	Apr	May	Jun	Jul	Aug	Sep	Oct	Nov	Dec	Jan	Feb	Mar	Total	%
5-14	<6	<7	<6	<10	***	<7	***	***	***	***	***	<8	48	7
15-29	22	17	29	26	27	32	32	25	31	24	24	30	319	49
30-59	20	25	23	15	16	18	19	18	32	28	24	26	264	40
60 plus	***	***	***	***	***	***	<6	***	***	***	***	***	21	3
<b>Total</b>	<b>50</b>	<b>48</b>	<b>57</b>	<b>50</b>	<b>46</b>	<b>58</b>	<b>57</b>	<b>46</b>	<b>64</b>	<b>58</b>	<b>51</b>	<b>67</b>	<b>652</b>	<b>100</b>

<sup>1</sup>Please note that all numbers less than five have been suppressed (with \*\*\*) in line with patient confidentiality and if there is only one number less than five in a category then two numbers will be suppressed to prevent back calculations from totals.

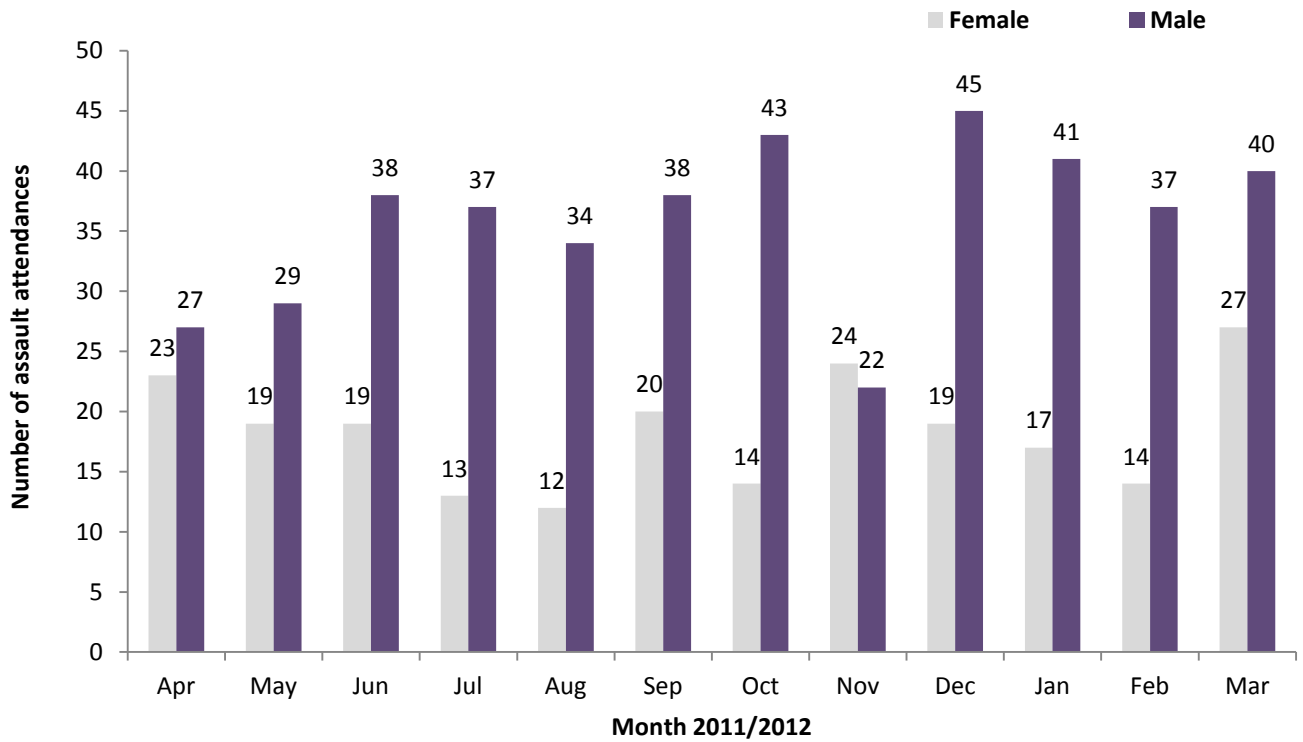
<sup>2</sup> Educational establishment includes: educational establishment; school other; school; school playground; and school sport. Public place includes public place and playing out.

<sup>3</sup> Please note percentages might not add to one hundred due to rounding.

<sup>4</sup> Admitted to CDGH includes: admitted, admitted to Chorley and South Ribble Hospital (CDGH) and admitted to Healey/Yarrow Ward. Admitted to RPH includes: admitted to Royal Preston Hospital (RPH) and admitted to the Avondale Unit. Other includes: primary care, other, dead on arrival and died in department. HCP=Health care provider and GP=general practitioner.

<sup>5</sup> There were no attendances in the 0-4 age group.

**Figure 3: Number of ED assault attendances by gender and month, April 2011 to March 2012**



**Table 5: ED assault attendances by incident location and month, April 2011 to March 2012**

Location	Apr	May	Jun	Jul	Aug	Sep	Oct	Nov	Dec	Jan	Feb	Mar	Total	%
Public place	18	12	14	11	21	20	22	18	22	12	15	17	202	31
Other	16	19	25	19	10	15	20	13	18	15	14	12	196	30
Home	13	7	7	6	7	***	7	***	7	11	10	11	91	14
Work	***	***	***	***	5	7	***	7	7	***	***	7	44	7
Home other	***	***	***	***	***	***	***	***	***	8	***	6	34	5
Public building	***	***	***	***	***	***	***	***	5	7	8	6	34	5
Educational establishment	***	***	***	***	***	***	***	***	***	***	***	5	26	4
Prison	***	***	***	***	***	***	***	***	***	***	***	***	11	2
Public park/playground	***	***	***	***	***	***	***	***	***	***	***	***	7	1
Garden	***	***	***	***	***	***	***	***	***	***	***	***	***	0
Holiday	***	***	***	***	***	***	***	***	***	***	***	***	***	1
Nursery	***	***	***	***	***	***	***	***	***	***	***	***	***	0
Special event	***	***	***	***	***	***	***	***	***	***	***	***	***	0
Sport	***	***	***	***	***	***	***	***	***	***	***	***	***	0
<b>Total</b>	<b>50</b>	<b>48</b>	<b>57</b>	<b>50</b>	<b>46</b>	<b>58</b>	<b>57</b>	<b>46</b>	<b>64</b>	<b>58</b>	<b>51</b>	<b>67</b>	<b>652</b>	<b>100</b>

**Table 6: ED assault attendances by discharge destination and month, April 2011 to March 2012**

Discharge destination	Apr	May	Jun	Jul	Aug	Sep	Oct	Nov	Dec	Jan	Feb	Mar	Total	%
Discharged	20	27	29	24	25	29	30	26	33	26	23	38	330	51
Follow-up	22	18	22	17	19	19	24	17	23	29	23	23	256	39
Other	***	***	***	<8	***	<9	***	***	***	***	5	6	47	7
Admitted	5	***	***	***	0	***	***	0	***	***	0	0	19	3
<b>Total</b>	<b>50</b>	<b>48</b>	<b>57</b>	<b>50</b>	<b>46</b>	<b>58</b>	<b>57</b>	<b>46</b>	<b>64</b>	<b>58</b>	<b>51</b>	<b>67</b>	<b>652</b>	<b>100</b>

Published May 2012

Johnathan Rooney (TIIG Officer)

Centre for Public Health, Liverpool John Moores University, 2nd Floor, Henry Cotton Campus, Liverpool, L3 2ET

Tel: 0151 231 4539 Email: j.rooney@ljmu.ac.uk

Website: [www.tiig.info](http://www.tiig.info) (please note data requests should be made through the website)